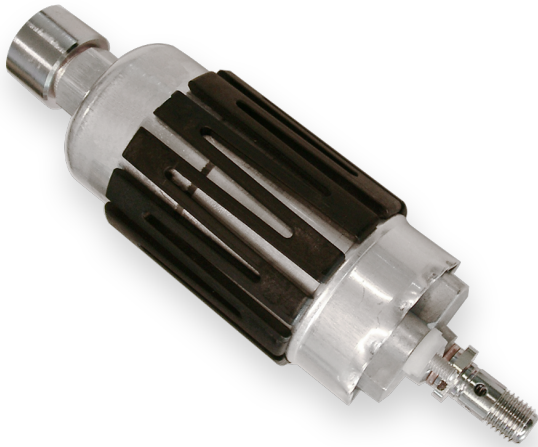


Fuel Pump FP 200-E



- ▶ >200 l/h
- ▶ No internal pressure limiting valve
- ▶ 750 g
- ▶ Fuel lines screwed
- ▶ Internal pre-filter on suction side with 300 µm

The FP 200-E is an inline roller cell pump for the installation outside the fuel tank (installation in the tank is not proven). It is capable of providing 200 l/h at 8 bar. Bio-fuel can be delivered up to E100 (shortens lifetime!). The FP 200-E is compatible with Gasoline and Diesel fuel.

Application

| | |
|--|---|
| Fuel pressure | Max. 8,0 bar |
| Gasoline delivery rate at 8 bar and 22°C | >200 l/h |
| Diesel delivery rate at 7 bar and 22°C | >180 l/h |
| Pressure limiting valve | Without. Subsequent assembly possible on pressure side by customer |
| Fuel compatibility | Up to E100 with shorter lifetime |
| Diesel compatibility | Given |
| Operating temperature range | -40 to 80°C ≤90°C for ≤5 h over 1.000 h lifetime ≤105°C for ≤1 h over 50 h lifetime |
| Storage temperature range | -30 to 60°C |
| Max. vibration IEC 60068-2-34 | 10 Hz 19,4 (m/s ²)/Hz 300 Hz 0,654 (m/s ²)/Hz 1.000 Hz 0,059 (m/s ²)/Hz |

Technical Specifications

Mechanical Data

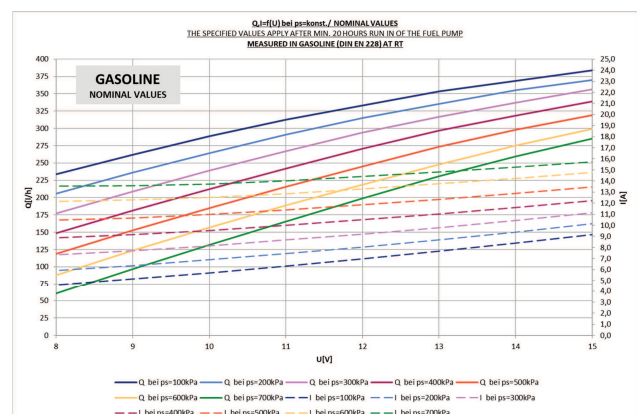
| | |
|----------|----------------------------------|
| Diameter | 60 mm |
| Length | 197 mm |
| Weight | 750 g (864 g incl. cable kit) |
| Mounting | Clamping |

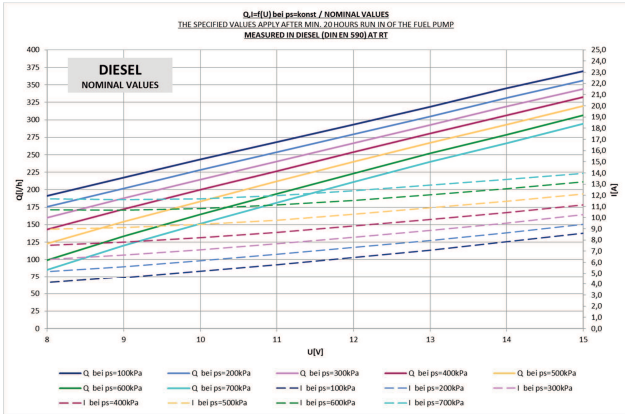
Electrical Data

| | |
|--------------------------------|---------------------------|
| Supply voltage | 6 to 15 V (26 V for 60 s) |
| Operating voltage | 13 V |
| Load current at 8 bar and 22°C | < 20 A |

Characteristic

| | |
|---------------------|----------------------------|
| Color | Silver |
| Non-return valve | External |
| Fuel filtering | External, on pressure side |
| Over-pressure valve | Without |





Connectors and Wires

| | |
|------------------------------------|--------------------------|
| Electrical connector | +M4/-M5 |
| Electrical mating connector | With ring wire M4 and M5 |
| Mechanical connector intake side | M18x1.5 |
| Mechanical connector pressure side | M12x1.5 |

Installation Notes

- Up to E100 with shorter lifetime
- For technical reasons the values may vary.
- Please use within the specified limit values only.
- Please find further application hints in the offer drawing at our homepage.
- Be careful, there is no over-pressure valve inside.

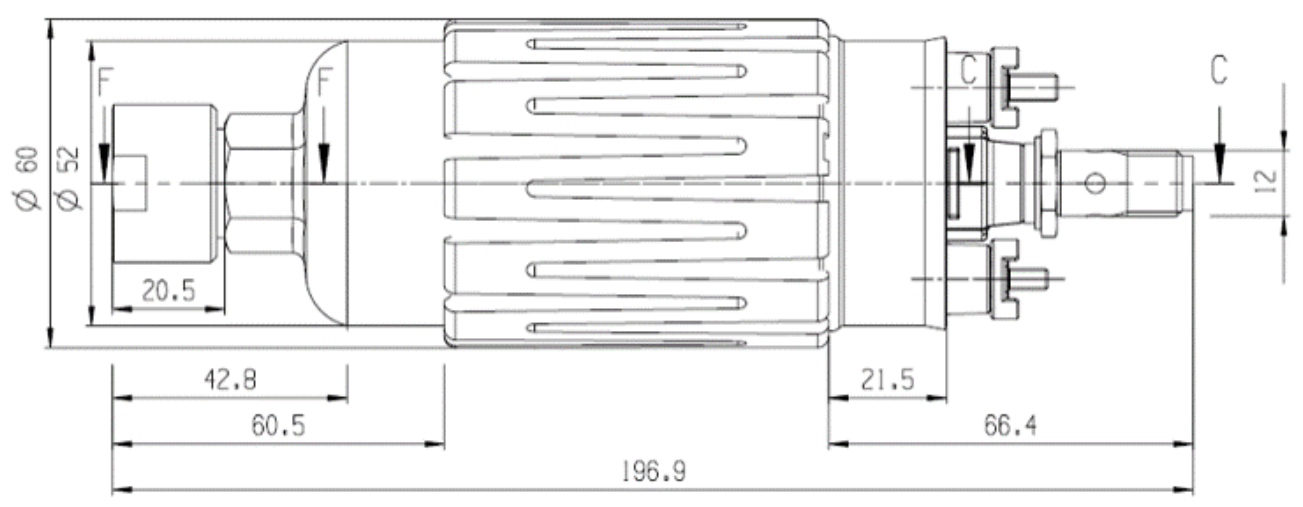
Legal Restrictions

Due to embargo restrictions, sale of this product in Russia, Belarus, Iran, Syria, and North Korea is prohibited.

Ordering Information

Fuel Pump FP 200-E
 Order number **0580.B00.12U-50**

Dimensions



Represented by:

Europe:
 Bosch Engineering GmbH
 Motorsport
 Robert-Bosch-Allee 1
 74232 Abstatt
 Germany
 Tel.: +49 7062 911 9101
 Fax: +49 7062 911 79104
 motorsport@bosch.com
 www.bosch-motorsport.de

North America:
 Bosch Engineering North America
 Motorsport
 38000 Hills Tech Drive
 Farmington Hills, MI 48331-3417
 United States of America
 Tel.: +1 248 876 2977
 Fax: +1 248 876 7373
 motorsport@bosch.com
 www.bosch-motorsport.com

Asia-Pacific:
 Bosch Engineering Japan K.K.
 Motorsports Department
 1-9-32 Nakagawa Chuo, Tsuzuki-ku
 Yokohama City
 Kanagawa Prefecture 224-8601
 Japan
 Tel.: +81 45 605 3032
 Fax: +81 45 605 3059
 www.bosch-motorsport.jp

Australia, New Zealand and South Africa:
 Robert Bosch Pty. Ltd
 Motorsport
 1555 Centre Road
 Clayton, Victoria, 3168
 Australia
 Tel.: +61 (3) 9541 3901
 motor.sport@au.bosch.com